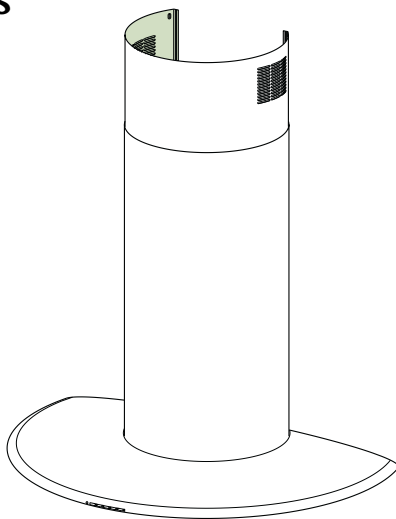


Gebrauchs- und Montageanleitung

- DE Bedienungsanleitung
- GB Instructions Booklet
- FR Mode d'emploi
- IT Libretto Istruzioni
- NL Gebruiksaanwijzing
- ES Manual de instrucciones



KD 9650.0 E

Küppersbusch

ALLERFEINSTE KÜCHENTECHNIK

Dear Customer,

If you follow the recommendations contained in this Instruction Manual, your appliance will give you constant high performance and will remain efficient for many years to come.

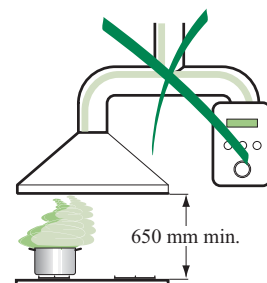
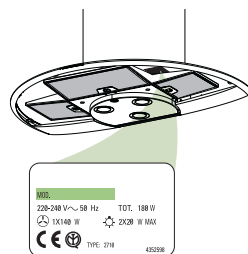
CONTENTS

RECOMMENDATIONS AND SUGGESTIONS	15
CHARACTERISTICS	16
INSTALLATION	17
USE	20
MAINTENANCE	21

RECOMMENDATIONS AND SUGGESTIONS

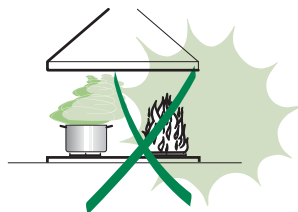
INSTALLATION

- The manufacturer will not be held liable for any damages resulting from incorrect or improper installation.
- The minimum safety distance between the cooker top and the extractor hood is 650 mm.
- Check that the mains voltage corresponds to that indicated on the rating plate fixed to the inside of the hood.
- For Class I appliances, check that the domestic power supply guarantees adequate earthing.
Connect the extractor to the exhaust flue through a pipe of minimum diameter 120 mm. The route of the flue must be as short as possible.
- Do not connect the extractor hood to exhaust ducts carrying combustion fumes (boilers, fireplaces, etc.).
- If the extractor is used in conjunction with non-electrical appliances (e.g. gas burning appliances), a sufficient degree of aeration must be guaranteed in the room in order to prevent the backflow of exhaust gas. The kitchen must have an opening communicating directly with the open air in order to guarantee the entry of clean air.



USE

- The extractor hood has been designed exclusively for domestic use to eliminate kitchen smells.
- Never use the hood for purposes other than for which it has been designed.
- Never leave high naked flames under the hood when it is in operation.
- Adjust the flame intensity to direct it onto the bottom of the pan only, making sure that it does not engulf the sides.
- Deep fat fryers must be continuously monitored during use: overheated oil can burst into flames.
- The hood should not be used by children or persons not instructed in its correct use.

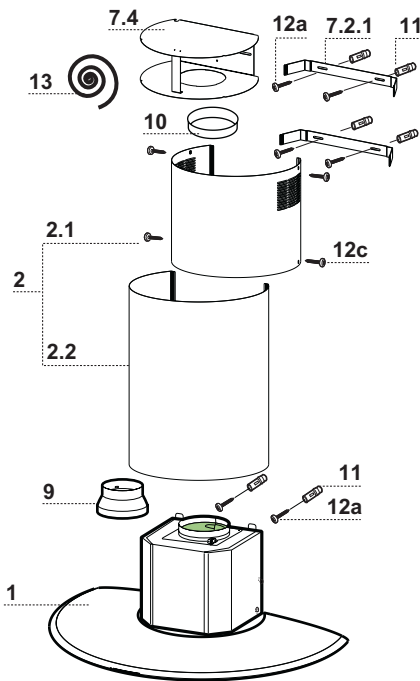


MAINTENANCE

- Switch off or unplug the appliance from the mains supply before carrying out any maintenance work.
- Clean and/or replace the Filters after the specified time period.
- Clean the hood using a damp cloth and a neutral liquid detergent.

CHARACTERISTICS

Components

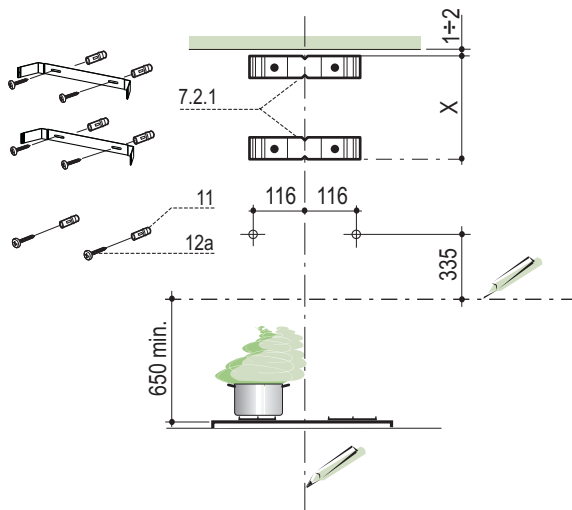


Ref.	Q.ty	Product Components
1	1	Hood Body, complete with: Controls, Light, Blower, Filters
2	1	Telescopic Chimney comprising:
2.1	1	Upper Section
2.2	1	Lower Section
8	1	Directional Air Outlet grille
9	1	Reducer Flange ø 150-120 mm
10	1	Flange ø 150 mm

Ref.	Q.ty	Installation Components
7.2.1	2	Upper Chimney Section Fixing Brackets
7.4	1	Air Outlet Connection
11	8	Wall Plugs
12a	8	Screws 4,2 x 44,4
12c	6	Screws 2,9 x 6,5
13	1	Gasket

Q.ty	Documentation
1	Instruction Manual

Wall drilling and bracket fixing

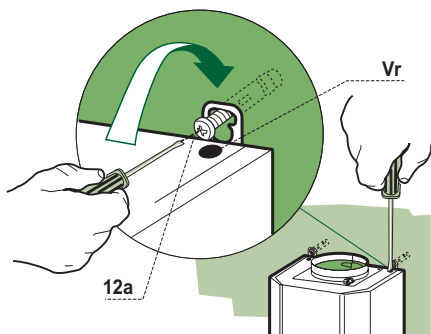


Wall marking:

- Draw a vertical line on the supporting wall up to the ceiling, or as high as practical, at the centre of the area in which the hood will be installed.
- Draw a horizontal line at 650 mm above the hob.
- Place bracket **7.2.1** on the wall as shown about 1-2 mm from the ceiling or upper limit aligning the centre (notch) with the vertical reference line.
- Mark the wall at the centres of the holes in the bracket.
- Place bracket **7.2.1** on the wall as shown at X mm below the first bracket (X = height of the upper chimney section supplied), aligning the centre (notch) with the vertical line.
- Mark the wall at the centres of the holes in the bracket.
- Mark a reference point as indicated at 116 mm from the vertical reference line and 335 mm above the horizontal reference line.
- Repeat this operation on the other side.
- Drill \varnothing 8 mm holes at all the centre points marked.
- Insert the wall plugs **11** in the holes.
- Fix the brackets using the **12a** screws (4,2 x 44,4) supplied.
- Insert the two screws **12a** (4,2 x 44,4) supplied in the hood body fixing holes, leaving a gap of 5-6 mm between the wall and the head of the screw.

Mounting the hood body

- Before attaching the hood body, tighten the two screws **Vr** located on the hood body mounting points.
- Hook the hood body onto the screws **12a**
- Fully tighten support screws **12a**
- Adjust screws **Vr** to level the hood body.

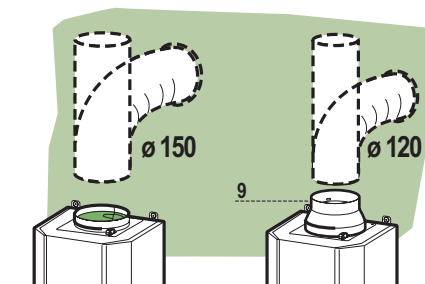


Connections

DUCTED VERSION AIR EXHAUST SYSTEM

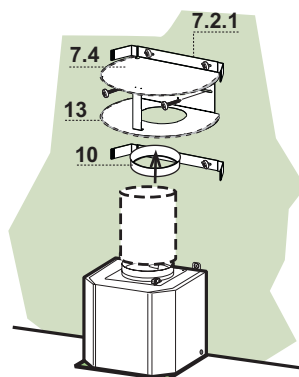
When installing the ducted version, connect the hood to the chimney using either a flexible or rigid pipe \varnothing 150 or 120 mm, the choice of which is left to the installer.

- To install a \varnothing 120 mm air exhaust connection, insert the reducer flange **9** on the hood body outlet.
- Fix the pipe in position using sufficient pipe clamps (not supplied).
- Remove any activated charcoal filters.



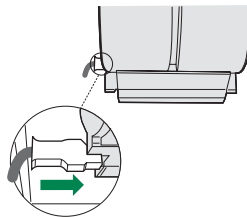
RECIRCULATION VERSION AIR OUTLET

- Lean the air outlet junction **7.4** against the wall and place it under the upper fixing bracket **7.2.1** centring it to the vertical reference line.
- Mark the centre of the fixing slots.
- Drill \varnothing 8 the marked points.
- Put the dowels **11** into the holes.
- Fix the flange **10** to the lower opening of the junction piece **7.4**.
- Fix the junction piece to the wall using the 2 screws **12a** (4,2x44,4) (supplied).
- Cut the gasket **13** into two pieces of same size and place them to the round shaped part of the junction piece.
- Connect the hood air outlet to the flange in the lower part of the junction using a rigid or flexible \varnothing 150 tube (by installer's choice).



ELECTRICAL CONNECTION

- Connect the hood to the mains through a two-pole switch having a contact gap of at least 3 mm.
- Open the lighting unit by turning the knob provided.
- Ensure that the supply cable connector is properly inserted into the Suction device socket



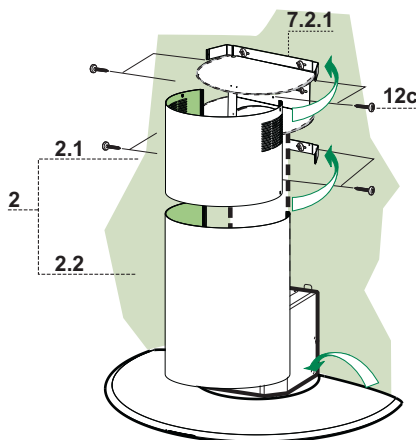
Flue assembly

Upper exhaust flue

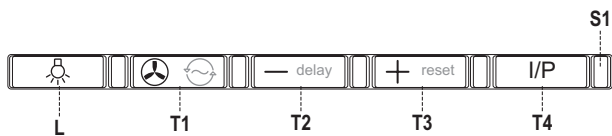
- Slightly widen the two sides of the upper flue and hook them behind the brackets **7.2.1**, making sure that they are well seated.
- Secure the sides to the brackets using the 4 screws **12c** (2,9 x 9,5) supplied.

Lower exhaust flue

- Open the two side flaps of the Chimney stack slightly, hook them between the upper Chimney stack and the wall, and close them again until they fit into place, fastening the lower part of the chimney stack into the hood canopy.



Control panel

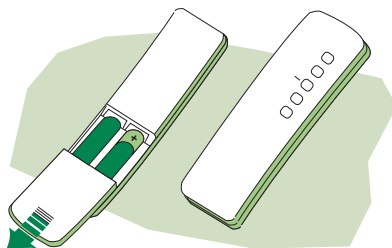


BUTTON		LED	FUNCTIONS
L		-	Turns the lighting system on and off.
T1	0/1 Motor	Fixed	Turns the motor on and off.
		Flashing	24h Exchange Enabled by pressing and holding the button for approx. 3". Provides 100 m ³ /h suction with a noise level of just 28dB(A). To disable, press the button again and hold for approx. 3".
T2	Speed		Decreases the working speed.
		Flashing	Delay (30') Press and hold the button for approx. 2" to enable a 30' automatic delayed shutdown. Suitable to complete elimination of any residual fumes.
T3	Speed		Increases the working speed.
T4	Speed	Fixed	Intensive speed. Suitable to deal with maximum vapour emission, this turns off automatically ten minutes after starting operation. It can be disabled by pressing the button T4.
		Flashing	POWER function (maximum suction power) Press T4 for approximately 3 seconds to enable the Power function (maximum suction power), which is indicated by flashing of the LED. This function will be revert to intensive speed after 5 minutes or when T4 is pressed again.
S1	Led	Fixed	Signals triggering of the Metal Grease Filters saturation alarm, indicating that the filters need washing. The alarm is triggered after the Hood has been operating for 100 working hours. (<i>Reset see paragraph on Maintenance</i>)
		Flashing	When enabled, signals triggering of the Activated Charcoal Filter, which must be replaced; the Metal Grease Filters must also be washed. The Activated Charcoal Filter saturation alarm is triggered after the Hood has been operating for 200 working hours. (<i>Enabling and Reset see paragraph on Maintenance</i>)

REMOTE CONTROL (OPTIONAL)

The appliance can be controlled using a remote control powered by a 1.5 V carbon-zinc alkaline batteries of the standard LR03-AAA type.

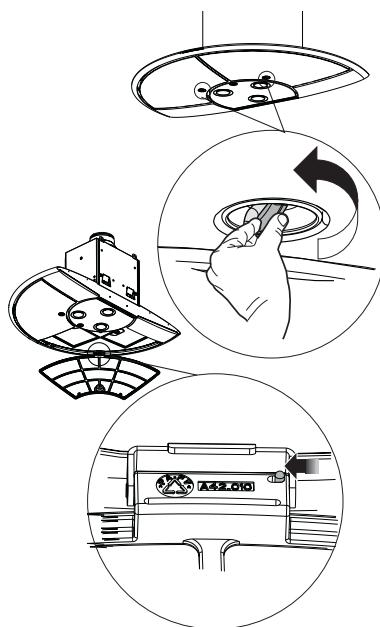
- Do not place the remote control near to heat sources.
- Used batteries must be disposed of in the proper manner.



MAINTENANCE

Cleaning the Comfort Panels

- Open the Comfort Panel using the knobs provided.
- Disconnect the panel from the hood canopy by sliding the fixing pin lever.
- The comfort panel must never be washed in a dishwasher.
- Clean the outside using a damp cloth and neutral liquid detergent.
- Clean the inside as well using a damp cloth and neutral detergent; do not use wet cloths or sponges, or jets of water; do not use abrasive substances.
- When the above operation has been completed, hook the panel back to the hood canopy and close it by turning the knob in the opposite direction.

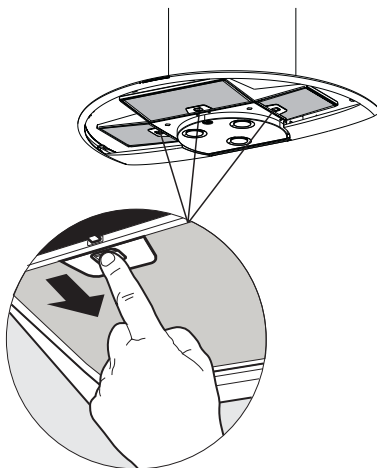


Alarm signal reset

- Turn the Lights and the suction Motor off, and disable the 24h function if it has been enabled.
- Press **T3** for at least 3 seconds, until indicators flash to confirm.

Cleaning the filters

- The filters must be cleaned every 2 months of operation, or more frequently for particularly heavy usage, and can be washed in a dishwasher.
- Open the Comfort Panel using the knobs provided.
- Remove the filters one at a time by pushing them towards the back of the group and pulling down at the same time.
- Wash the Filters without bending them, and leave them to dry thoroughly before replacing. (The surface of the filter may change colour after a time, but this has absolutely no effect on its efficiency.)
- When refitting the filters, make sure that the handle is visible on the outside.
- Close the comfort panel.



Activated charcoal filter (Recirculation version)

- The filter is not washable and cannot be regenerated. It must be replaced when led **S1** flashes or at least every 4 months. The alarm signal will only light up when the extractor motor is switched on.

Alarm signal activation

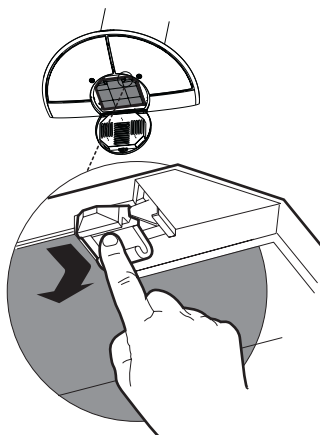
- In Recirculation version Hoods, the Filter saturation alarm can be enabled on installation or at a later date.
- Turn the Lights and the suction Motor off.
- Press and hold the **T3** button for at least 10 seconds, until the LEDs start to flash. Note the number of flashes:
 - 2 flashes of the LED Activated charcoal filter saturation alarm ENABLED.
 - 1 flash of the LED Activated charcoal filter saturation alarm DISABLED;

Alarm signal reset

- Turn the Lights and the suction Motor off, and disable the 24h function if it has been enabled.
- Press **T3** for at least 3 seconds, until the LEDs flash in confirmation.

Replacing the Filter

- Open the lighting unit by turning the knob provided.
- Remove the saturated activated carbon filter by releasing the fixing hooks
- Fit the new filter by hooking it into its seating
- Replace the lighting unit.



Lighting

LIGHT REPLACEMENT

20 W halogen light.

- Extract the lamp from the lamp holder by pulling gently.
- Replace with another of the same type, making sure that the two pins are properly inserted in the lamp holder socket holes.

